



Course User Guide

This guide will walk through how to access and use the online **Coaching New Drivers** courses offered through the **Teen Driver Blueprint** platform. These courses are designed to help you supervise your new driver while they gain the experience they need behind the wheel. Driving is one of the riskiest activities they will engage in during their life. Together with effective training and **your coaching and support**, we can greatly reduce their risk!

Powered by the:



facebook.com/coachingnewdrivers

e-learning platform

instagram.com/coachingnewdrivers

What Happens Next

1. You will receive an email with your login instructions shortly before the license dates you entered when registering. If your new driver already has their learner's or license you will receive an email within two business days
2. Review this guide for tips on using the Coaching New Drivers learning platform most effectively.
3. If you like you can watch some or all of the lessons ahead of your teen receiving their learner's permit and your supervised driving sessions.
4. When you are ready to start practicing with your teen, watch the lessons together ahead of each step of the program.
5. Proceed with the lessons at your own pace and in line with the progression of your teen's driving. If you have already started supervised driving you may skip several lessons to the level you are currently driving with them.
6. Practice lots! Of all the activities you practice with your children over the years, this will be the one with the most potential impact throughout their lifetime!



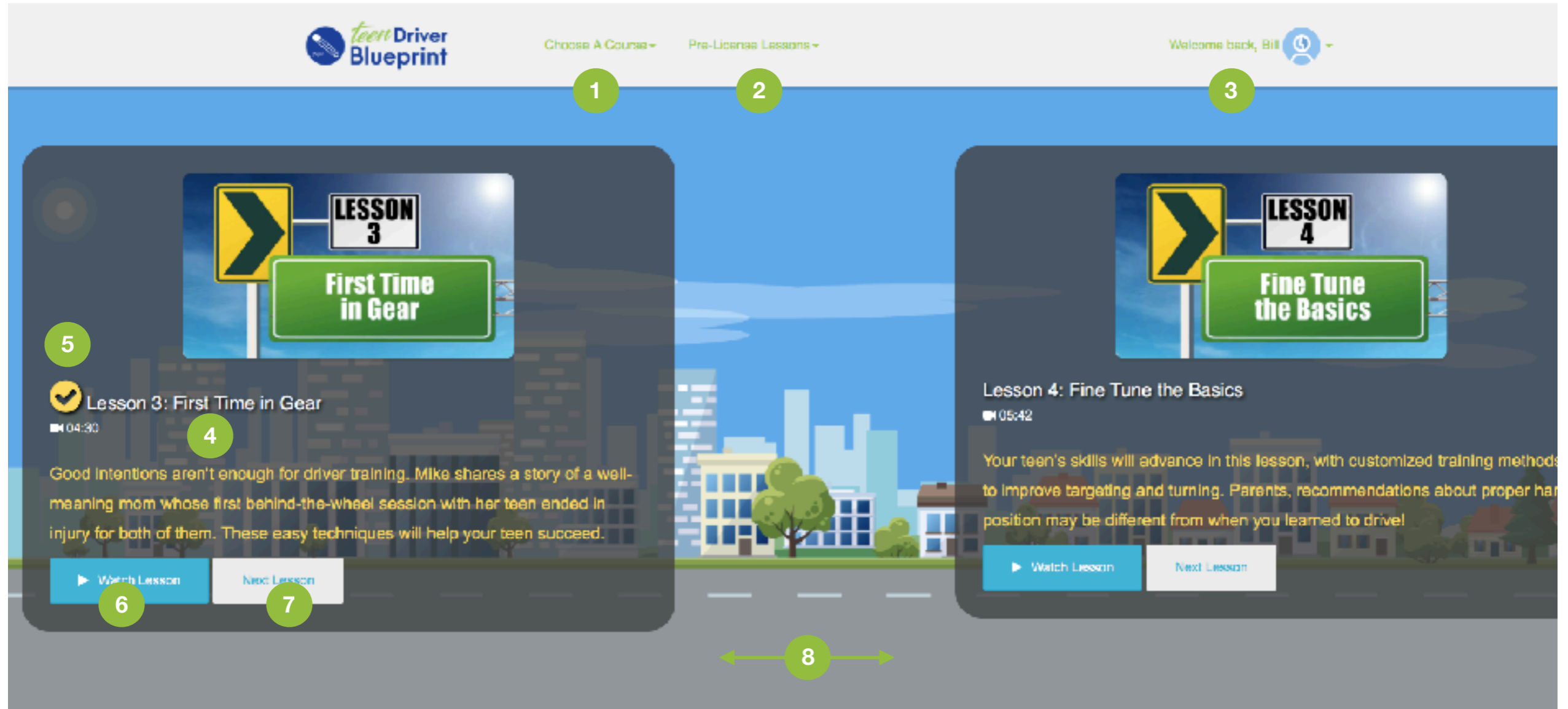
The Coaching New Drivers online courses are hosted at the teendriverblueprint.com e-learning site. Once you receive your login instructions you can access your courses at this site anytime.

If you purchased a package that includes the post-license training, here's what to expect:

1. On the date you indicated your new driver would be eligible to drive on their own, we will send you an email to see if they were successful in getting their driver's license.
2. If they have not received their driver's license yet, no worries we will send you a follow-up email every 30 days to check in. If they have received their license, you will be sent the necessary information to enrol in the course and get started.
3. Every two weeks you (or your teen) will receive an email notifying you of a new Danger Zone Training lesson available for your teen to take. By your teen taking small bite-size chunks of information at regular intervals, the retention of defensive driving information will be greatly enhanced at the most critical time in their driving career!
4. Remember to always monitor your new driver, even after they have their license, to make sure they are still driving like they did in all those hours of practice you helped them with!

Enjoy your courses we hope that together we can make a very **POSITIVE IMPACT** on your new driver!

Dashboard Controls - Computer/Tablet



1 Dropdown menu to choose course

2 Dropdown menu to choose lesson

3 Dropdown menu to change password, settings or log out

4 Click to begin playing lesson

5 Indicates lesson has been watched

6 Click to watch lesson

7 Click to advance to next lesson

8 *Scroll or swipe up or down to move between available lessons (swiping or scrolling left or right will not move screen)*

Course Player Controls - Computer/Tablet



- 1 Return to dashboard
- 2 Click to play lesson
- 3 Adjust volume
- 4 Adjust play speed and quality

- 5 Full screen mode
- 6 To rewatch a lesson, click this button. When it disappears, hit play again.
- 7 Click to advance to next lesson, if you have already watched this lesson you may have to hit the MARK INCOMPLETE button first.

Smartphone Best Use Guidelines

Dashboard Controls



- 1 Click to begin playing lesson
- 2 Indicates lesson has been watched
- 3 Click to watch lesson
- 4 Click to advance to next lesson
- 5 *Scroll or swipe up or down to move between available lessons (swiping or scrolling left or right will not move screen)*
- 6 Click to access menu

For best experience always hold the phone up and down when using the dashboard to select lessons and hold the phone sideways when using the course player to watch a lesson.

Course Player Controls



- 1 Return to dashboard
- 2 Click to play lesson
- 3 Adjust volume
- 4 Adjust play speed and quality
- 5 Full screen mode
- 6 To rewatch a lesson, click this button. When it disappears, hit play again.
- 7 Click to advance to next lesson, if you have already watched this lesson you may have to hit the MARK INCOMPLETE button first.

Basic Troubleshooting

If you are having any issues accessing the course, watching the lessons or navigating within the platform we recommend trying one or more of these troubleshooting solutions first:

- 1 Go to <http://www.refreshyourcache.com/en/home/> and try to refresh your cache. Sometimes browser caching causes problems.
- 2 Try accessing the course on a different browser (Chrome, Firefox, Edge, Safari, IE, Opera, etc). Sometimes the installation of your browser may be damaged. If it works on every browser but one, you can try reinstalling that browser.

Tip: We recommend using Google Chrome as your browser for our course (Chrome is one of the best programs for running online applications).

- 3 Try accessing and using the course on a different device or computer (mobile phone, tablet, PC/Mac laptop/desktop, etc.). Sometimes a certain device has trouble with a content type. This is rare but could be a problem.

If you are unable to solve your issue by using one of these fixes please email our platform support team at support@coachingnewdrivers.com. They will get back to you as soon as possible.

Thank you for becoming an active part of your teen's driving success, we hope you and your teen find these courses as beneficial as we do!